



**SCHOTTKY DIODE MODULE TYPE 400A**

**Features**

High Surge Capability  
Type 150V  $V_{RRM}$

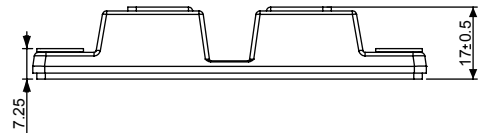
**Maximum Ratings**

Operating Temperature: -55 °C to +150 °C  
Storage Temperature: -55 °C to +150 °C



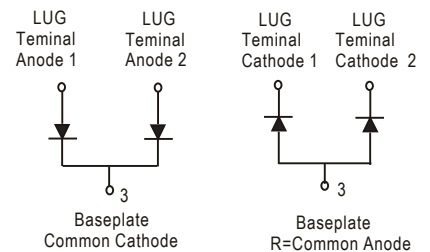
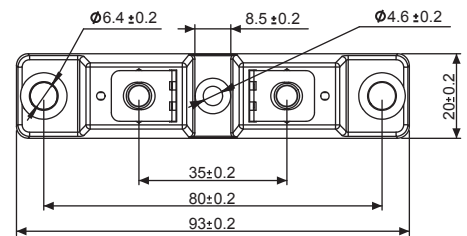
Part Number	Maximum Recurrent Peak Reverse Voltage	Maximum RMS Voltage	Maximum DC Blocking Voltage
MBRQ402150CT(R)	150V	105V	150V

Dimensions in mm (1 mm = 0.0394")



**Electrical Characteristics @ 25 °C Unless Otherwise Specified**

Average Forward Current (Per pkg)	$I_{F(AV)}$	400A	$T_C=125\text{ }^\circ\text{C}$
Peak Forward Surge Current (Per leg)	$I_{FSM}$	3400A	8.3ms , half sine
Maximum Instantaneous Forward Voltage NOTE (1)	$V_F$	0.74V 0.85V	$I_{FM}=200A; T_J=125\text{ }^\circ\text{C}$ $I_{FM}=200A; T_J=25\text{ }^\circ\text{C}$
Maximum Instantaneous Reverse Current At Rated DC Blocking Voltage (Per leg)	$I_R$	4mA 10mA 50mA	$T_J = 25\text{ }^\circ\text{C}$ $T_J = 100\text{ }^\circ\text{C}$ $T_J = 150\text{ }^\circ\text{C}$
Maximum Thermal Resistance Junction To Case (Per leg)	$R_{\theta jc}$	0.35 °C/W	
Mounting torque		$3 \pm 0.5\text{Nm}$ $3 \pm 0.5\text{Nm}$	To heatsink To terminals



NOTE :

(1) Pulse Test: Pulse Width 300  $\mu$  sec. Duty Cycle < 2%



Figure.1 - Typical Forward Characteristics

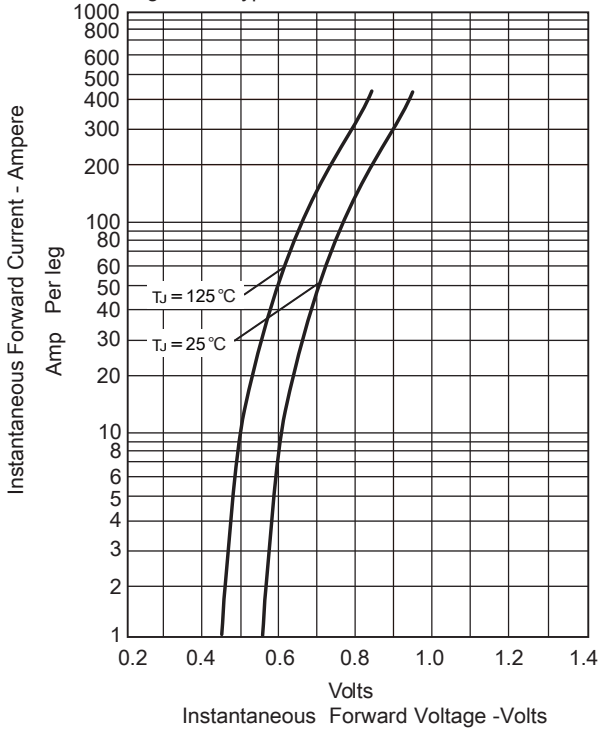


Figure.2 - Forward Derating Curve

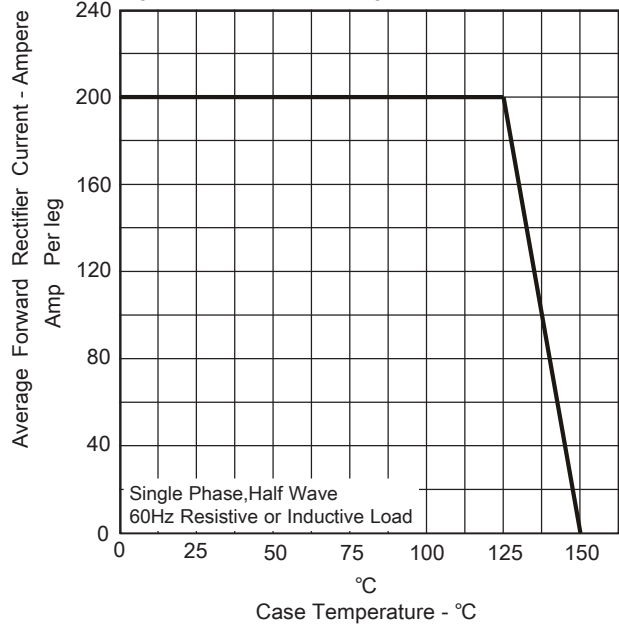


Figure.3 - Peak Forward Surge Current

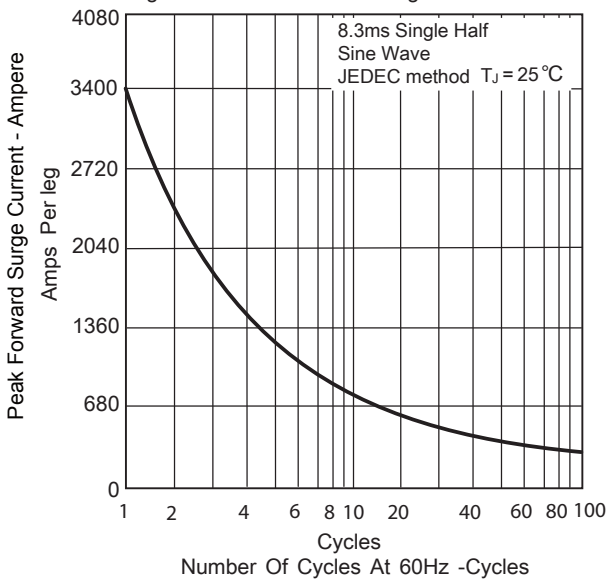


Figure.4 - Typical Reverse Characteristics

