



SCHOTTKY DIODE MODULE TYPE 240A

Features

High Surge Capability
Type 60V V_{RRM}

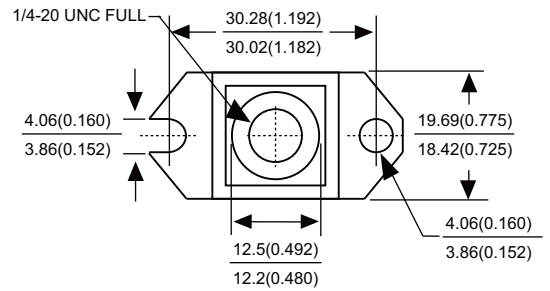


Maximum Ratings

Operating Temperature: -55°C to $+150^{\circ}\text{C}$
Storage Temperature: -55°C to $+150^{\circ}\text{C}$

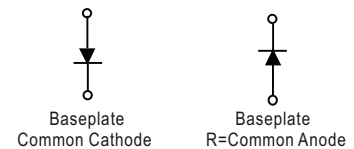
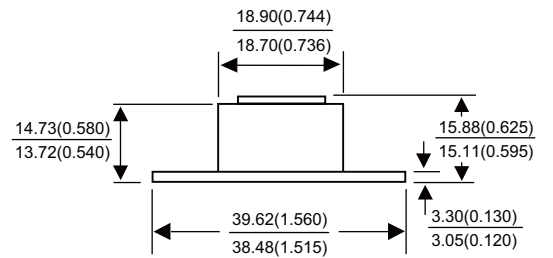
Part Number	Maximum Recurrent Peak Reverse Voltage	Maximum RMS Voltage	Maximum DC Blocking Voltage
MBRH24060(R)	60V	42V	80V

Dimensions in mm (1 mm = 0.0394")



Electrical Characteristics @ 25 °C Unless Otherwise Specified

Average Forward Current (Per pkg)	$I_{F(AV)}$	240A	$T_C=125^{\circ}\text{C}$
Peak Forward Surge Current	I_{FSM}	3300A	8.3ms, half sine
Maximum Instantaneous Forward Voltage	V_F	0.78V	$I_{FM}=240A; T_J=25^{\circ}\text{C}$
Maximum Instantaneous Reverse Current At Rated DC Blocking Voltage	I_R	1mA 10mA 50mA	$T_J = 25^{\circ}\text{C}$ $T_J = 100^{\circ}\text{C}$ $T_J = 150^{\circ}\text{C}$
Maximum Thermal Resistance Junction To Case	$R_{\theta jc}$	0.30°C/W	



NOTE :

(1) Pulse Test: Pulse Width 300 μ sec. Duty Cycle < 2%

