



SCHOTTKY DIODE MODULE TYPES 240A

Features

High Surge Capability
Types Up to 200V V_{RRM}

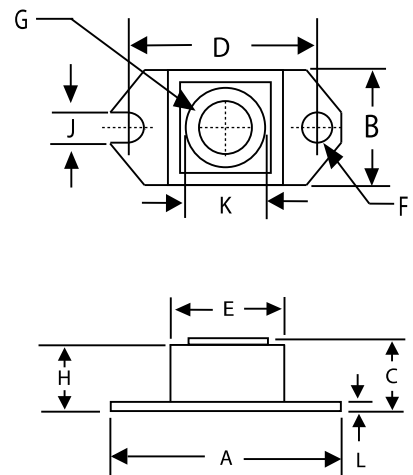
**240 Amp Rectifier
150-200 Volts**

HALF PACK (D-67)

Maximum Ratings

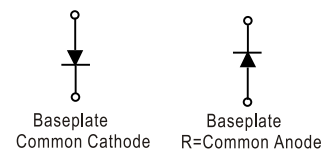
Operating Temperature: -55°C to $+150^{\circ}\text{C}$
Storage Temperature: -55°C to $+150^{\circ}\text{C}$

Part Number	Maximum Recurrent Peak Reverse Voltage	Maximum RMS Voltage	Maximum DC Blocking Voltage
MBRH240150(R)	150V	106V	150V
MBRH240200(R)	200V	141V	200V



Electrical Characteristics @ 25 °C Unless Otherwise Specified

Average Forward Current (Per pkg)	$I_{F(AV)}$	240A	$T_C=125^{\circ}\text{C}$
Peak Forward Surge Current	I_{FSM}	3300A	8.3ms, half sine
Maximum Instantaneous Forward Voltage 150V 200V	V_F	0.88V 0.92V	$I_{FM}=240\text{ A}; T_J=25^{\circ}\text{C}$
Maximum Instantaneous Reverse Current At Rated DC Blocking Voltage NOTE (1)	I_R	3 mA 10 mA 50 mA	$T_J = 25^{\circ}\text{C}$ $T_J = 100^{\circ}\text{C}$ $T_J = 150^{\circ}\text{C}$
Maximum Thermal Resistance Junction To Case	$R_{\theta jc}$	0.30°C/W	



DIM	DIMENSIONS				NOTE
	INCHES		MM		
	MIN	MAX	MIN	MAX	
A	1.515	1.560	38.48	39.62	
B	.725	.775	18.42	19.69	
C	.595	.625	15.11	15.88	
D	1.182	1.192	30.02	30.28	
E	.736	.744	18.70	18.90	
F	.152	.160	3.86	4.061	∅
G	1/4 - 20 UNC				
H	.540	.580	13.72	14.73	
J	.156	.160	3.96	4.06	
K	.480	.492	12.20	12.50	∅
L	.120	.130	3.05	3.30	

NOTE :

(1) Pulse Test: Pulse Width 300 μsec , Duty < 2%



Figure .1- Typical Forward Characteristics

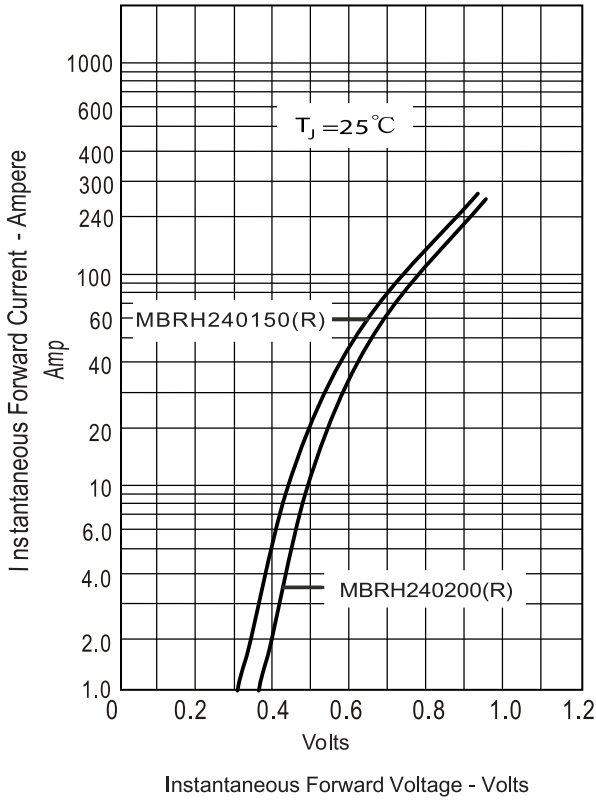


Figure .2- Forward Derating Curve

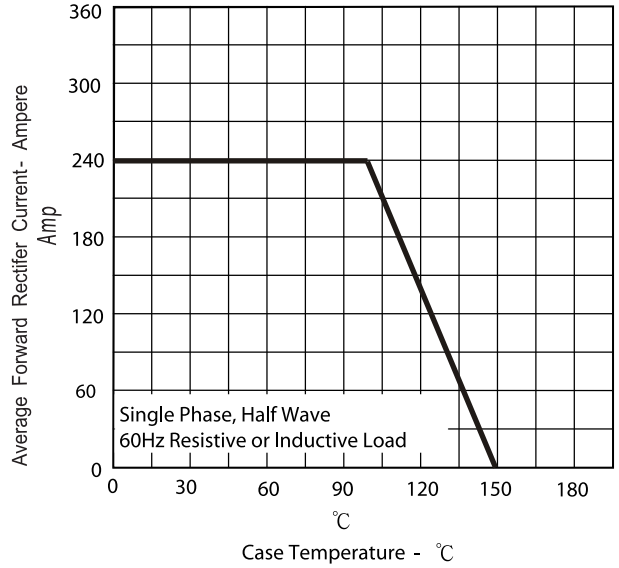


Figure.3-Peak Forward Surge Current

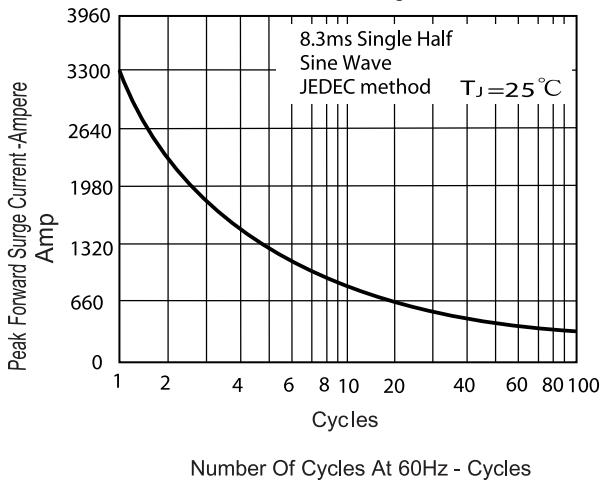


Figure .4- Typical Reverse Characteristics

