



SCHOTTKY DIODE MODULE TYPES 200A

Features

High Surge Capability
Types Up to 200V V_{RRM}

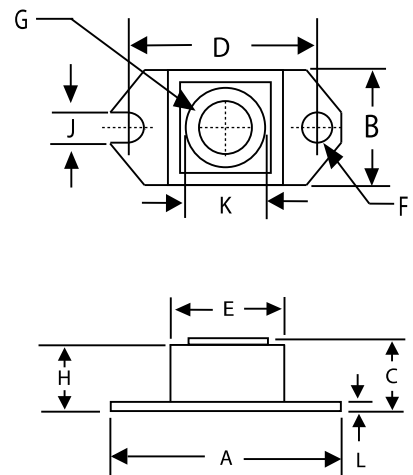
200 Amp Rectifier
150-200 Volts

HALF PACK (D-67)

Maximum Ratings

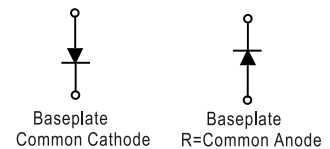
Operating Temperature: -55°C to $+150^{\circ}\text{C}$
Storage Temperature: -55°C to $+150^{\circ}\text{C}$

| Part Number | Maximum Recurrent Peak Reverse Voltage | Maximum RMS Voltage | Maximum DC Blocking Voltage |
|---------------|--|---------------------|-----------------------------|
| MBRH200150(R) | 150V | 106V | 150V |
| MBRH200200(R) | 200V | 141V | 200V |



Electrical Characteristics @ 25°C Unless Otherwise Specified

| | | | |
|--|-----------------|----------------------------------|--|
| Average Forward Current (Per pkg) | $I_{F(AV)}$ | 200A | $TC=125^{\circ}\text{C}$ |
| Peak Forward Surge Current | I_{FSM} | 3000A | 8.3ms, half sine |
| Maximum Instantaneous Forward Voltage 150V 200V | V_F | 0.88V 0.92V | $I_{FM}=200\text{ A}; T_J=25^{\circ}\text{C}$ |
| Maximum Instantaneous Reverse Current At Rated DC Blocking Voltage NOTE (1) | I_R | 3 mA 10 mA 50 mA | $T_J = 25^{\circ}\text{C}$ $T_J = 100^{\circ}\text{C}$ $T_J = 150^{\circ}\text{C}$ |
| Maximum Thermal Resistance Junction To Case | $R_{\theta jc}$ | 0.35 $^{\circ}\text{C}/\text{W}$ | |



| DIM | DIMENSIONS | | | | NOTE |
|-----|------------|-------|-------|-------|---------------|
| | INCHES | | MM | | |
| | MIN | MAX | MIN | MAX | |
| A | 1.515 | 1.560 | 38.48 | 39.62 | |
| B | .725 | .775 | 18.42 | 19.69 | |
| C | .595 | .625 | 15.11 | 15.88 | |
| D | 1.182 | 1.192 | 30.02 | 30.28 | |
| E | .736 | .744 | 18.70 | 18.90 | |
| F | .152 | .160 | 3.86 | 4.061 | \varnothing |
| G | 1/4-20UNC | | | | |
| H | .540 | .580 | 13.72 | 14.73 | |
| J | .156 | .160 | 3.96 | 4.06 | |
| K | .480 | .492 | 12.20 | 12.50 | \varnothing |
| L | .120 | .130 | 3.05 | 3.30 | |

NOTE :

(1) Pulse Test: Pulse Width 300 μsec , Duty < 2%



Figure .1- Typical Forward Characteristics

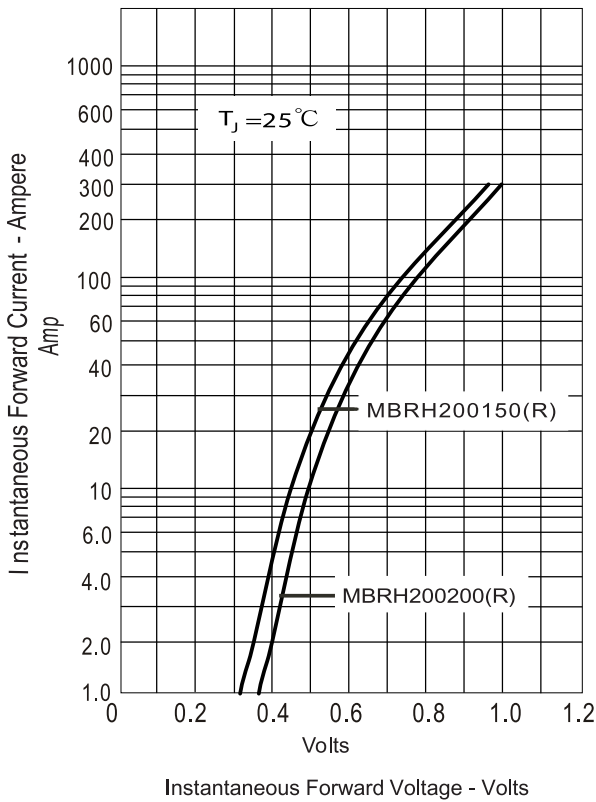
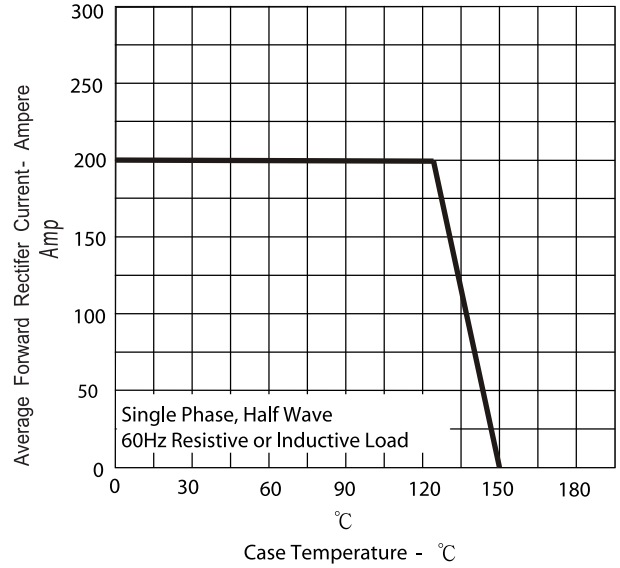


Figure .2- Forward Derating Curve



Instantaneous Forward Voltage - Volts

Figure.3-Peak Forward Surge Current

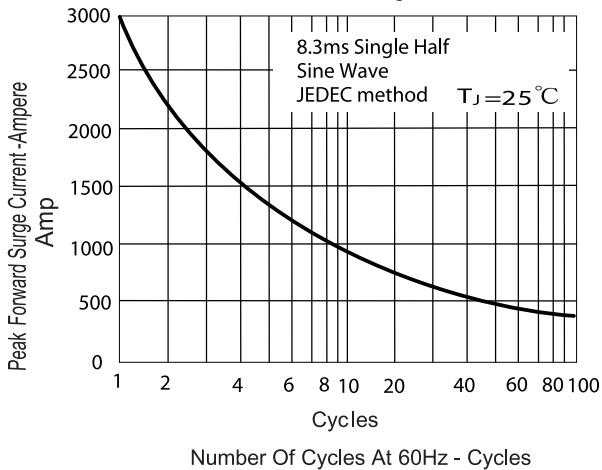


Figure .4- Typical Reverse Characteristics

